



PXTTM

Proven solution.
Radically enhanced.

exgle
QUALITY. ASSURED.

Eagle advances inline detection and inspection technologies for poultry products.

As a pioneer in meat and poultry inspection, Eagle delivers advanced inline x-ray inspection and detection solutions. With Eagle's new breakthrough PXT™ technology, processors can achieve superior product safety and assured quality, whilst benefiting from the lowest total cost of ownership.

The NEW industry standard in x-ray detection technology.

For over 20 years Eagle's expertise in single and dual energy technologies have been the proven standard in x-ray detection across the global food industry. Eagle's newest PXT™ solution is the latest advancement for x-ray detection. This technology offers significant proven performance for superior detection of bones and other contaminants for a wide range of poultry processing applications.



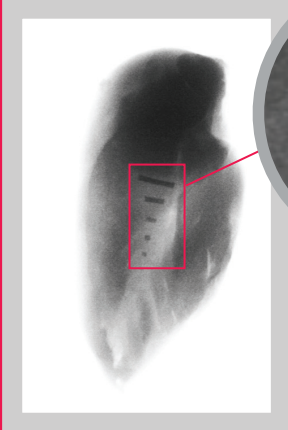
Product



Single



Dual



PXT™

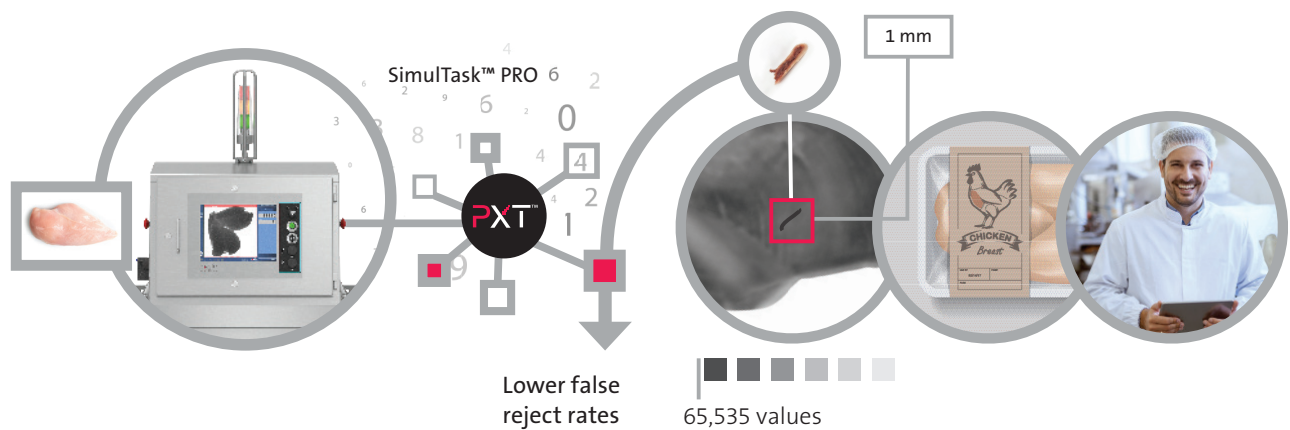


The new PXT™ technology has been radically enhanced to empower superior performance.



(Performance X-ray Technology)

PXT™ is a breakthrough technology that enables poultry processors to obtain much higher resolution images and capture more detailed data about the product being inspected than has previously been possible. When these images are instantly processed, you'll see an increase in detection accuracy and significantly reduced false reject rates. Eagle machines equipped with PXT™ and SimulTask™ PRO provide the industry's highest level of in-line, automated bone detection while simultaneously performing product quality and integrity checks. Eagle x-ray devices equipped with PXT™ technology can be run as stand-alone critical control points or networked to enable full process optimization and efficiency analysis.



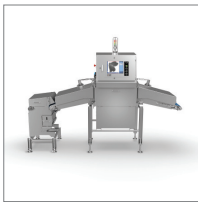
These high-resolution images from PXT™ when analyzed with SimulTask™ PRO allows the application of multiple processing algorithms to work in parallel for every image captured providing remarkably more accurate image analysis. Because of this, machines newly equipped with PXT™ will benefit from:

- **Unparalleled Detection:** Automating the ability to continuously detect the smallest of bone fragments, down to 1 millimeter.
- **Lower False Rejects:** This means less product rework, resulting in reduced labor requirements.
- **Unmatched Versatility:** Suitable for all forms of poultry, for fresh or frozen, bulk flow to retail packages and from single to multi-lane processing lines.
- **Lowest Total Cost of Ownership:** Maximum uptime and simplicity of operation combine to improve throughput and minimize total cost of operation.



Proven solution. Radically enhanced.

When you chose the Eagle RMI 400 or the PACK 400 HC systems equipped with PXT™ you can expect accurate detection and reliable results.



The Eagle RMI 400 equipped with PXT™ technology and SimulTask™ PRO advanced imaging software delivers the highest levels of bone detection for raw and unpackaged product prior to further processing.



The Eagle Pack 400 HC equipped with PXT™ is a high performance x-ray inspection system for fresh, refrigerated or frozen packaged poultry providing superior bone and other forms of contamination detection.

Superior return on your investment.

PXT™’s radically enhanced x-ray inspection technology provides unmatched performance for the next generation of poultry processing. Beyond that, with the new PXT™ technology you will ultimately get a superior return on your investment, including:



Unrivaled product safety



Exceptional quality



Improved processes



Enhanced system versatility



Reduced operating costs

Ensure customer and brand protection when you **inspect more, and expect more, with Eagle.**

Eagle Product Inspection

1571 Northpointe Parkway,
Lutz, FL 33558, USA
+1-877-379-1670 (telephone)
+1-813-543-2049 (fax)

eaglesales@eaglepi.com
www.eaglepi.com

Subject to technical changes. © 06/2021 Eagle Product Inspection.

